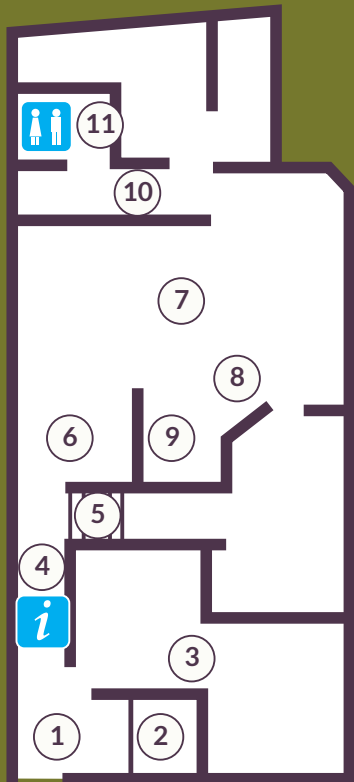
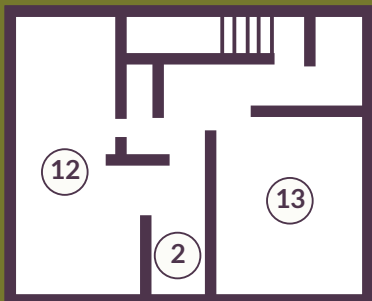


## ground floor



entrance

## first floor



# Penmaenmawr Museum Guide



### 1 museum entrance

Go right to get to the coffee shop. Go straight ahead to get to the museum gallery.


### 2 lift

The lift will take you upstairs to the first floor.

### 3 coffee shop

You can buy coffee, tea, soft drinks and cakes in the coffee shop. There is a screen showing silent films about Penmaenmawr and Conwy.

### 4 tourist information

 On the wall there is a rack of leaflets. The leaflets tell you about places you can visit in the area. The leaflets are free.

### 5 stairs

The stairs lead to the first floor. On the first floor there is a quiet room and a meeting room.

### 6 museum desk

A museum volunteer will greet you at the desk. The volunteer will give you information about the museum and answer questions.

### 7 museum gallery

The museum gallery has information about the history of Penmaenmawr. There are two audio film units in the museum gallery that play films about Penmaenmawr. You can listen to the films with headphones. There is one touch-screen TV in the museum gallery. It has no sound. You can use it to read information about Penmaenmawr and look at photographs.

### 8 children's mini museum

This is a play area for children. If you are a child, you can choose to play here if you want, but you don't have to.

There is a play desk and a table and chairs where you can sit to draw and colour on paper. There are clothes to play dressing up. There may be other children playing here and some of them may be noisy and some of them may be quiet. If you choose to play here, you may have to share the space and the items to play with.


### 9 special exhibitions

We put up new displays in this space. The displays are about the history of Penmaenmawr.

### 10 toilet corridor

This corridor leads to the toilet. The toilet is the last door on the right. On the walls there is information about the history of toilets in Penmaenmawr. At the end of the corridor there is a chair. The person you are with can sit and wait for you here.

### 11 toilet

 The toilet is for everyone to use who comes to visit the museum. The tap is automatic. When you put your hands under it, the water will come out. When you take your hands away, the water will stop. There is an emergency pull-cord in the toilet. Pull it if you need help. If you pull it, a volunteer will come and ask what help you need.

### 12 meeting room

This room is used for meetings and activities like arts and crafts.

### 13 quiet room

If you would like to go somewhere quiet when you are in the museum, please ask a volunteer to show you to the quiet room. There are some comfortable chairs in the quiet room. You can sit here until you feel ready to return to the museum or the people you are with.

## sunflower lanyard



Sunflower lanyards are available in Penmaenmawr Museum. If you choose to wear the lanyard, our volunteers will understand that you have a hidden disability and you may want a little help or more time. You don't need to explain why you are using the lanyard or provide proof of a disability. You'll find the lanyards in the coffee shop and in the museum gallery. They are free to use.

## british sign language (bsl)

Some of the museum's volunteers are learning British Sign Language (BSL) and they would welcome the chance to improve their skills with visitors who use BSL. You will also find some local history in BSL on the museum's digital screens.



## accessibility

Penmaenmawr Museum is easy to get around. Doorways and corridors are a minimum of 1.2m wide and the layout of public spaces and the public toilet allows for wheelchair access and turning. The floors of the museum are level and you will not come across ramps or steps.



## hearing loop

Around the museum, you'll see signs with this symbol. This is where induction loops are available.



## assistance dogs

Visitors with assistance dogs are welcome.



# Penmaenmawr Museum Guide



*a clear guide to  
help you  
find your way  
around  
Penmaenmawr  
Museum*